

PERFECT LASER

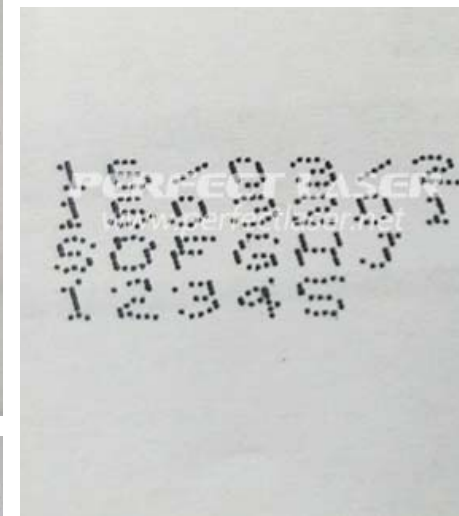
Fully-Automatic High Resolution Expiry Date QR Code Logo Numbers Inkjet Printer

model:PM-900





- 1** 20 years experience in producing Industrial Inkjet printer
- 2** Customer-orientated
- 3** Wish to provide benefit to agents and customers
- 4** Free consulting, life-long service
- 5** Engineer Overseas Installation available
- 6** 10000+ Customers Choice
- 7** Perfect Laser will be your best Partner





Perfect Laser is a professional inkjet printer manufacturer, offering best printer equipment, first-class technology, perfect service.

In order to meet the needs of the market, Perfect Laser recently developed a inkjet printer named Fully-Automatic High Resolution Expiry Date QR Code Logo Numbers Inkjet Printer. Different from the dot matrix inkjet printer, based on printing technology, we successfully developed of the touch screen high-resolution inkjet printer. This inkjet printer can control 1-8 print heads at the same time, with high resolution and high print speed characteristics, widely used in a variety of production lines to print two-dimensional text, batch number, date, cycle, pictures, logo, bar code , QR code and other information. Once launched, this ink printer has been widely praised by new and regular customers both at home and abroad.

Application

Ink printer Printing material

Corrugated paper, coated cartons, flexible packaging, rigid plastic, cartons and liquid containers.

Ink printer application areas

Food packaging, beverage packaging, cosmetics, personal care, pharmaceutical and building materials.

- ◆ 1.This inkjet printing machine with 7-inch touch screen operation interface: simple appearance, easy to operate.
- ◆ 2.This inkjet printing machine can support quickly identify one-dimensional code, two-dimensional code printing.
- ◆ 3.The inkjet printing machine 's printer head can be adjusted to increase the printing height: single head spray printing height 12.7mm, you can increase the number of printer head, improve inkjet printing height.
- ◆ 4.The inkjet printing unit is diversified: The inkjet printer system can support multiple printing units, can be customized according to customer needs.
- ◆ 5.The inkjet printing machine with strong adaptability:Able to adapt to various leaflets and roll paper feeding platforms.
- ◆ 6.Can print bar code and QR code which can be read.
- ◆ 7.Import of environmental protection ink:the application of drug and food requirements.
- ◆ 8.free cleaning of the printer head, save manpower and increase the work efficiency.
- ◆ 9.Intelligent control inkjet printing ink software: Inkjet printing software is equipped with intelligent management control function, saving in later period.
- ◆ 10.System full English interface, simple operation.
- ◆ 11.Full metal jacket: beautiful industrial design makes inkjet printer whole body more solid and the machine runs more stably.
- ◆ 12.Can be combined numbers, Chinese characters, English arbitrary according to customer demand.
- ◆ 13.Independent Penma: Independent Penma printer head,maintenance-free.

1.LCD Touching Screen

7 inch touch screen interface, simple appearance, easy to operate.



2.Fast Drying Ink

Use fast drying ink cartridge, which is connecting with the printer head.

Customers can print different color with one set of machine. No need to clean the printer head, free of maintnce .



3.USB and Network Interface

Can print different logos and pictures via USB or Network interface import into the machine and printing.



4.Power Switch

Easy operate
And long time using



5. Photoelectric Switch

Photoelectric Switch sense the materials passed then printing. Intelligent and achieve accuracy printing.



6. Cartridge Chip Interface

Use ink cartridge which Included chip. Printing height can reach 12.7mm.



7.Bracket

For fixing the machine, and also adjust the print distance from printer head to the materials.



Optional Item



The conveyer belt is an optional item

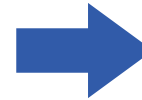


Standard Machine

+

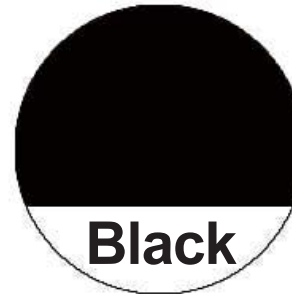


Optional Item

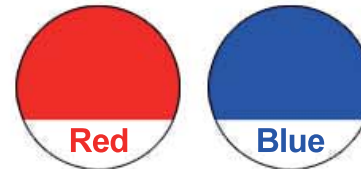


Model	High Resolution inkjet Printer PM-900
Printing system	2.5
Printing height	12.7 mm
Resolution	38M/MIN 600*600DPI 76M/MIN 600*300DPI
Interface	Ethernet port / USB
Display	7 inch touch screen
Print type	Text, batch, date, database, picture, bar code, two-dimensional code
Power supply	110/220VAC 50/60Hz
Others	Analog speed print & simulated eye print

Standard Color



Optional Color



**One printer can use different colors ink
cartridge**

One printer support single color.

Terms and Conditions



Q: What's the package?

A: We have 3 layers package. For the outside, we adopt wood craft case. In the middle, the machine is covered by foam, to protect the machine from shaking. For the inside layer, the machine is covered by thickening plastic bag for waterproof.

Q: Will the package damaged during transportation?

A: Our package is considerate all the damage factors and make it to be safe, and our shipping agent have full experienced in safe transportation. We have exported to 180 countries worldwide. So please don't worry, you will receive the parcel in good condition.

Q: How to install and run the machine?

A: Our technician have installed the machine before shipping. For some small parts installation, we will send detail training video, user's manual along with the machine. 95% customers can learn by themselves.

Q: How can I do if the machine goes wrong?

A: If confronted with such problems, please contact us asap and do not try fix the machine by yourself or someone else. We will response within 24 hours as quick as we can to solve it for you.